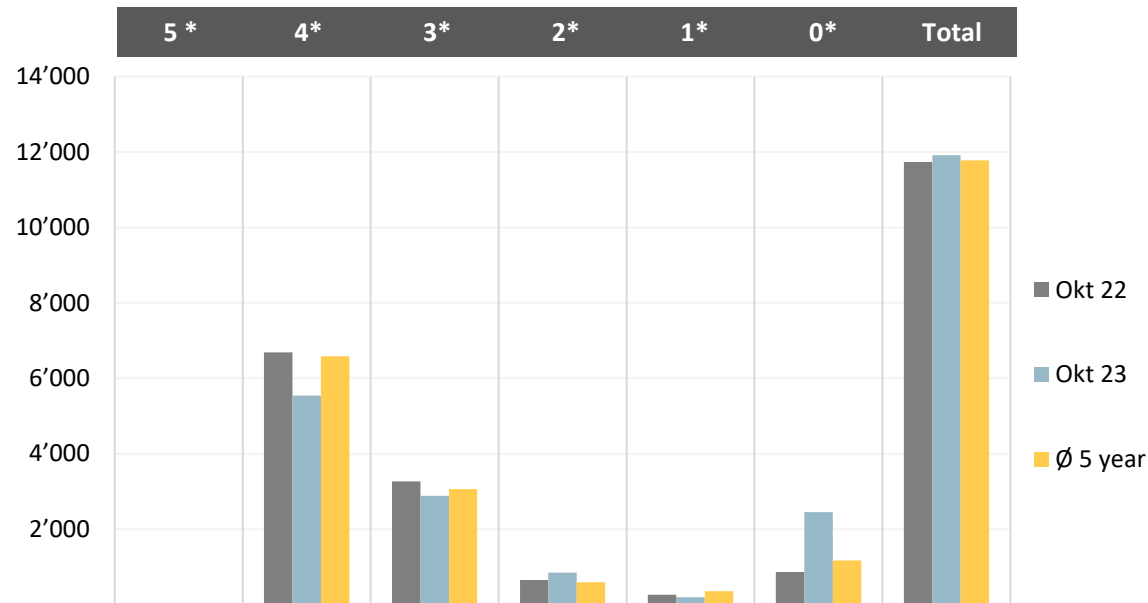


Overnight stays hotels comparison



Month	5 star	4 star	3 star	2 star	1 star	sp. hotels	Total
Okt 22	0	6'686	3'271	651	266	863	11'737
Okt 23	0	5'540	2'883	845	197	2'454	11'919
Ø 5 year	14	6'581	3'066	597	353	1'168	11'780
comp. to prev. year	#DIV/0!	-17.1%	-11.9%	29.8%	-25.9%	184.4%	1.6%
comp. Ø 5 years	#DIV/0!	-15.8%	-6.0%	41.5%	-44.2%	110.1%	1.2%
capacity 2022	0	7'345	3'693	644	740	1'540	13'962
occupancy 2022	0.0%	91.0%	88.6%	0.0%	35.9%	0.0%	84.1%
capacity 2023	0	8'043	3'142	1'202	720	7'648	20'755
occupancy 2023	0.0%	68.9%	91.8%	0.0%	27.4%	0.0%	57.4%