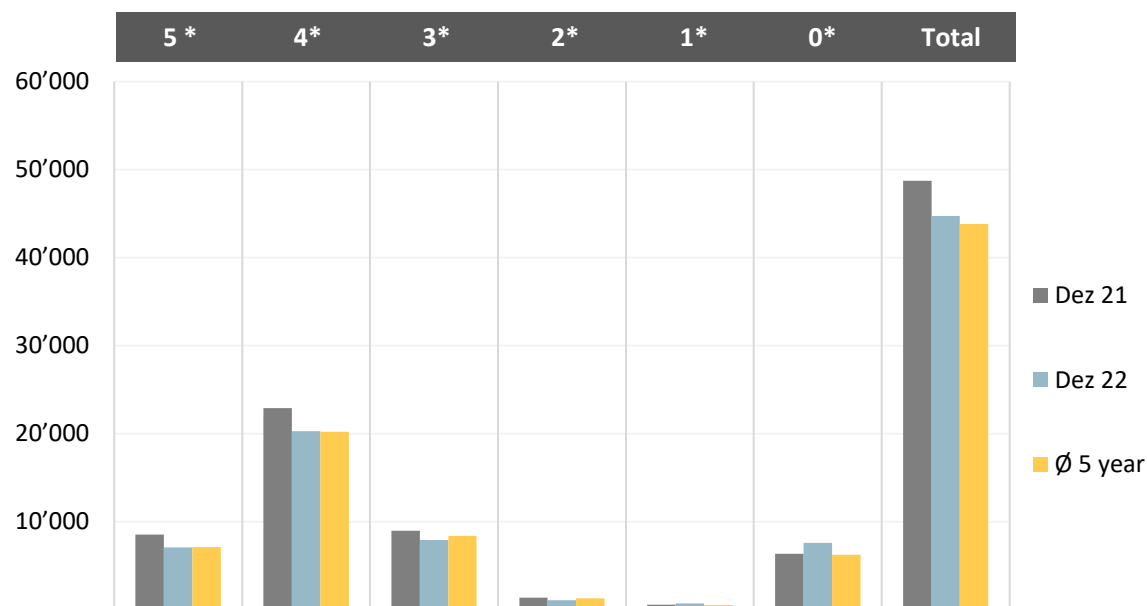


## Overnight stays hotels comparison



Month	5 star	4 star	3 star	2 star	1 star	sp. hotels	Total
Dez 21	8'538	22'916	8'977	1'371	589	6'362	48'753
Dez 22	7'101	20'298	7'918	1'105	724	7'602	44'748
Ø 5 year	7'118	20'227	8'399	1'294	558	6'245	43'842
comp. to prev. year	-16.8%	-11.4%	-11.8%	-19.4%	22.9%	19.5%	-8.2%
comp. Ø 5 years	0.2%	0.4%	-5.7%	-14.6%	29.7%	21.7%	2.1%